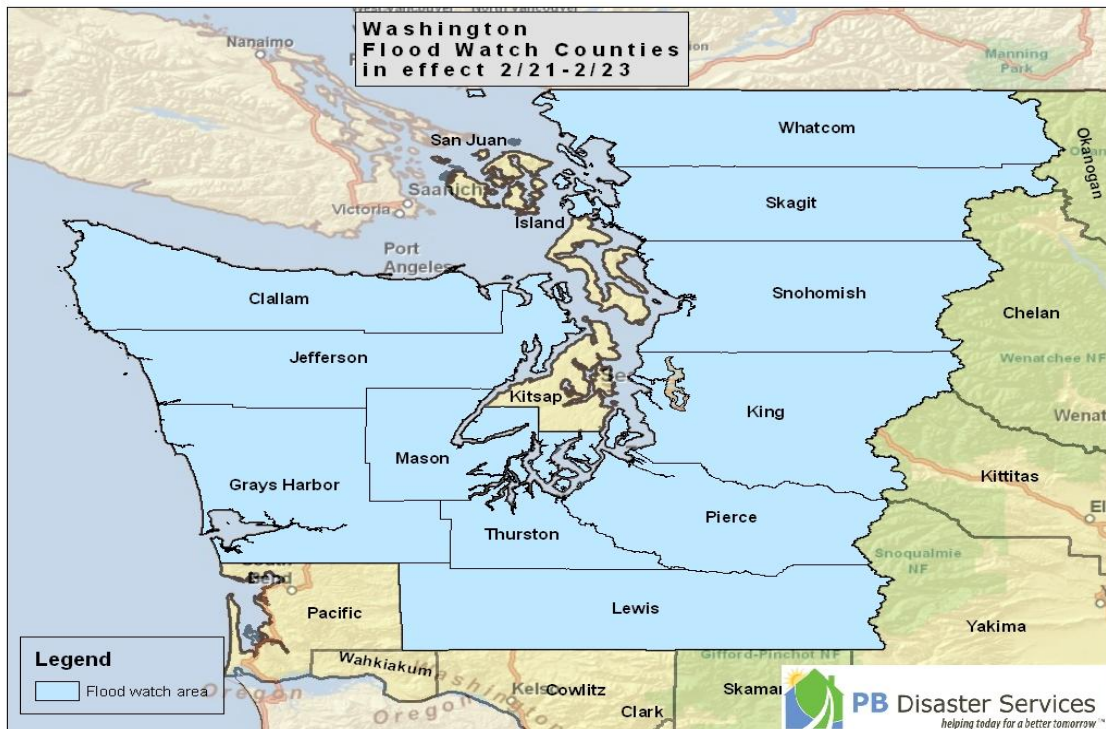




THE DAILY DART

PB'S **DISASTER AWARENESS REPORT** FEBRUARY 22, 2012



WESTERN WASHINGTON RIVER FLOODING—UPDATE:

- At 8:00 p.m. EST on February 21, 2012, the U.S. Army Corps of Engineers (USACE) Seattle District Commander, declared a USACE emergency in response to **the ongoing western Washington river flooding event**.
- The Snohomish River in western Washington State is forecasted to reach **major damage stage tonight, February 22**. -- The Army Corps of Engineers (USACE) reports that the Union Slough Levee located along the Snohomish River at the City of Everett, WA **is at risk of breaching** from high flows anticipated from the Snohomish River.
- The levee has received significant riverward scour damage and significant loss of levee embankment material.
- The levee was damaged in the 2009 flood and received additional damage in 2011 flooding.
- The USACE believes that it is unlikely that the Union Slough Levee will survive another significant flood event without repair.



- **Residences**, agricultural land and commercial structures (i.e. large lumber mill) and the City of Everett's wastewater treatment plant **are found within the inundation area**.
- Snohomish County has requested assistance with temporary measures to protect business and residential structures from flooding.
- The USACE Seattle District Commander declared a [USACE] emergency in response to this event, and activated the USACE Seattle District EOC to Activation Level III (monitoring) on February 21, 2012 and will be operating at extended hours.
- Today, February 22, the Seattle District Office will deploy Snohomish Flood Team members to assist the Snohomish County Diking District #5 and community of Everett, WA.
- The Washington State EOC is not activated and has not requested FEMA assistance.

SPRING FLOOD OUTLOOK FOR RED RIVER VALLEY

- Figures released by the National Weather Service show the **chances for minor flooding are less than 33 percent in most areas for the** Red River in eastern North Dakota. And between the South Dakota and Canadian borders, **the possibility of major flooding on the Red River is between just 1 percent and 6 percent**.
- The flood forecast is equally favorable for the rest of North Dakota. In western North Dakota, the risk of widespread spring flooding from snowmelt is classified as below normal.
- There's **only a slim chance that Devils Lake will reach a record level this summer**. Along the Missouri and James rivers, the weather service said, flooding would only happen if there were heavy spring rains or ice jams.
- Fargo **has a 53 percent chance of minor flooding and a 12 percent chance of moderate flooding**.
- Moderate flooding could shut down a few streets and trails, though the city has built up several areas and bought out hundreds of homes on the flood plain during the last several years.

SPRING FLOOD OUTLOOK FOR MISSOURI RIVER

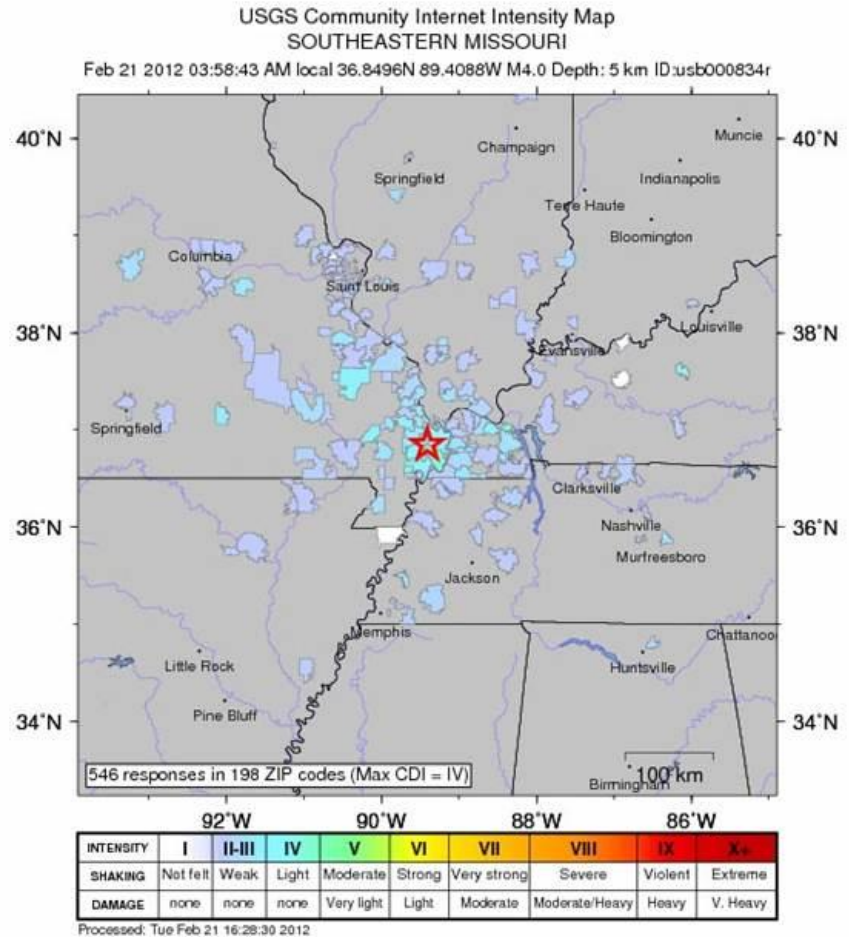
- Per assessment of the U.S. Army Corps of Engineers and the National Weather Service ... if significant flooding occurs this year on the Missouri River, it probably will come from local thunderstorms, not extraordinary releases from upstream dams, as last year.... **the stretch of the Missouri from Plattsmouth to St. Louis is at minor risk of flooding**, probably from rainstorms.
- This stretch has had successive years of flooding and experienced the most broken levees last year.
- **In Nebraska and Iowa, the weather service says the risk for flooding this spring is near or below normal** at most places.
- **Minor flooding is expected along** the Missouri River south of Omaha and Council Bluffs, **and some flooding is also likely along the** North Platte River near North Platte. This is common in lowland areas every spring.
- Across the entire Missouri River basin, North Platte, Neb., **is one of two communities at the highest risk of flooding**, and the threat there from the Platte River is classified as **"moderate"**



EARTHQUAKE ACTIVITY

Missouri

- On Tuesday, February 21, 2012 at 4:58 a.m. EST, a magnitude 4.0 earthquake occurred approximately 9 miles east-southeast of Sikeston, MO and 16 miles southwest of Cairo, IL at a depth of 3.1 miles.
- Media reported minor damage; including falling items from shelves, broken windows, minor cracks in walls and sidewalks, but there were no reports of injuries.
- The earthquake was reportedly felt in Missouri, Illinois, Arkansas, Kentucky, and Tennessee, and as far away as North Carolina and Tennessee.
- The Region VII RRCC and the Missouri State EOC were not activated; there has been no request for
- FEMA assistance and none is anticipated.



PB DISASTER SERVICES UPDATE

Standby Status:

PB Disaster Services is currently on standby for Oregon.

PB Disaster Services has active field operations in the following declarations:

Active Disasters as of 02/22/2012			
Disaster Number and State	Disaster Type	Number of Counties Declared	Declaration Has Been Active
DR- 4042 VA	Earthquake	5 counties	109 days active
DR- 4030 PA	Tropical Storm Lee	28 counties	162 days active
DR- 4029 TX	Wildfires	23 counties	165 days active
DR- 4023 CT	Tropical Storm Irene	8 counties	171 days active
DR- 4022 VT	Tropical Storm Irene	12 counties	174 days active
DR- 4021 NJ	Hurricane Irene	21 counties	170 days active
DR- 1981 ND	Flooding	10 counties	242 days active



Cited News Sources:

<http://www.fergusfallsjournal.com/2012/02/20/nd-flood-outlook-favorable/>

<http://www.omaha.com/article/20120217/NEWS01/702179892/1101821>

<http://www.therepublic.com/view/story/3232c0fe4a384913904eb6ac14a9e4b5/IA--Low-Flood-Threat-Iowa/>

<http://nebraskaradionetwork.com/2012/02/21/corp-of-engineers-flood-chances-this-spring-are-low-to-very-low/>

http://articles.boston.com/2012-02-21/news/31084001_1_new-madrid-seismic-zone-earthquake-magnitude

<http://www.fema.gov/emergency/reports/index.shtm>

http://today.msnbc.msn.com/id/46465402/ns/today-today_news/t/earthquake-missouri-shakes-states/

<http://www.thenewstribune.com/2012/02/22/2036470/flooding-w-washington-rivers-cresting.html>

